

## Cabinet U-handles

### Aluminium

#### SPECIFICATION

Aluminium

Powder coated, textured finish

black, RAL 9005 **SW**

UV-resistant

Red, RAL 3000 **RS**

Silver, RAL 9006 **SR**

Powder coated, antimicrobial finish

Black, RAL 9005 **SMA**

White, RAL 9016 **WSA**

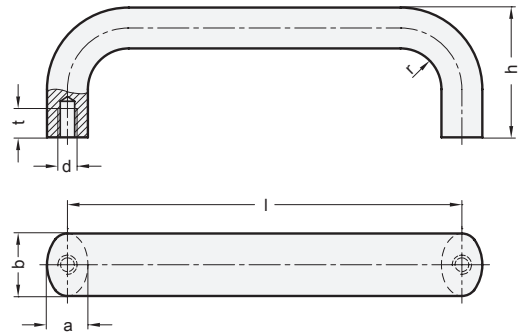
Anodized, natural colour **EL**

Plain, tumbled **BL**



#### INFORMATION

Cabinet U-handles GN 565 are manufactured from a bent aluminium profile and have excellent stability and ergonomic design. In addition to the standard surfaces, these cabinet U-handles are also available with a functional coating. The **SW** version is coated with a highly weather-resistant and UV-resistant powder coating system, making this version excellent for out-door use. The **SMA / WSA** versions have a powder coating based on silver ions, which gives them antimicrobial properties. The principle of action has been shown to reduce the contamination of the handle surfaces within 24 hours so that fewer than 1% of bacteria and fewer than 5% of viruses ultimately survive. Standard parts with antimicrobial plastic coating are primarily used in the health care sector and in public buildings, such as airports.



#### TECHNICAL INFORMATION

- Load Rating information (see page A35)

\* Complete with

<b>SW</b>	<b>RS</b>	<b>SR</b>	<b>SMA</b>	<b>WSA</b>	<b>EL</b>	<b>BL</b>
RAL 9005	RAL 3000	RAL 9006	RAL 9005, antimicrobial	RAL 9016, antimicrobial	Anodized	Plain, tumbled

#### GN 565

Description	b	l ±0.25	a	d	h	r	t min.	⚖
GN 565-20-100-*	20	100***	13	M 6	49	13	10	87
GN 565-20-112-*	20	112***	13	M 6	49	13	10	93
GN 565-20-117-*	20	117	13	M 6	49	13	10	100
GN 565-20-120-*	20	120**	13	M 6	49	13	10	107
GN 565-20-128-*	20	128***	13	M 6	51	13	10	114
GN 565-20-160-*	20	160***	13	M 6	51	13	10	121
GN 565-20-180-*	20	180**	13	M 6	51	13	10	128
GN 565-20-200-*	20	200	13	M 6	51	13	10	150
GN 565-20-235-*	20	235**	13	M 6	51	13	10	172
GN 565-26-112-*	26	112	17	M 8	55	17	12	161
GN 565-26-117-*	26	117	17	M 8	55	17	12	166
GN 565-26-120-*	26	120**	17	M 8	55	17	12	171
GN 565-26-125-*	26	125	17	M 8	55	17	12	180
GN 565-26-128-*	26	128***	17	M 8	55	17	12	189
GN 565-26-160-*	26	160***	17	M 8	57	17	12	210
GN 565-26-179-*	26	179	17	M 8	57	17	12	234
GN 565-26-192-*	26	192***	17	M 8	57	17	12	245
GN 565-26-300-*	26	300***	17	M 8	57	17	12	345
GN 565-26-400-*	26	400	17	M 8	57	17	12	440
GN 565-26-500-*	26	500	17	M 8	57	17	12	538

\*\* Suitable for 19" rack and enclosure layout

\*\*\* Sizes also available for type WSA and SMA